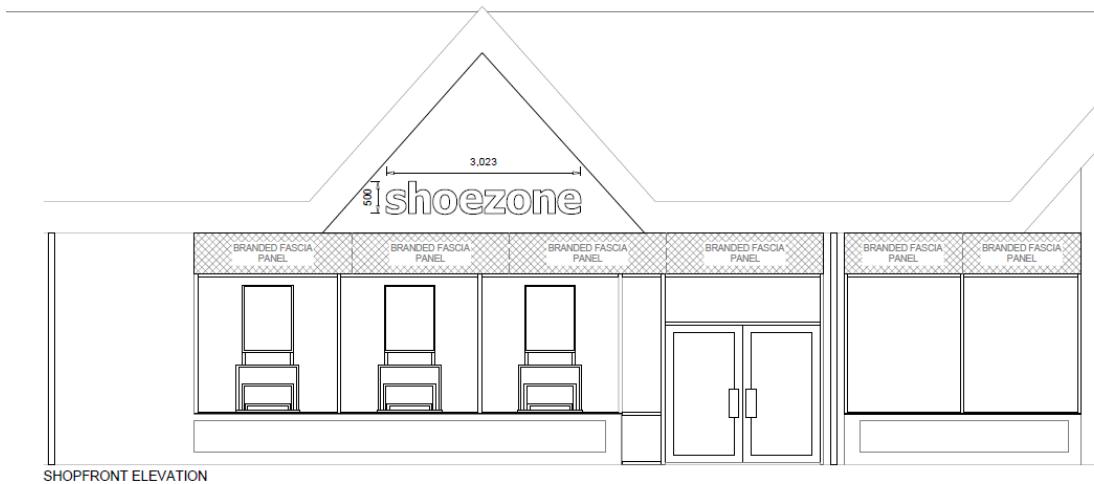




22 January 2020

**Whitehaven, Bridges Retail Park**  
**Shoe Zone to open adjoining Greggs**



Threadneedle completed the sub-division of the 6,000 sq ft former PoundWorld unit in mid-November and Greggs opened their third store in the town in the first week of December.

The adjoining unit of about 4,047 sq ft is to be opened by Shoe Zone in March 2020.

Gregory Moore Property is advising Threadneedle Property Unit Trust. John Beach of Ramsdens advised Shoe Zone.