

23 March 2020

Whitehaven, Unit 4, Bridges Retail Park

Shoe Zone open adjoining Greggs

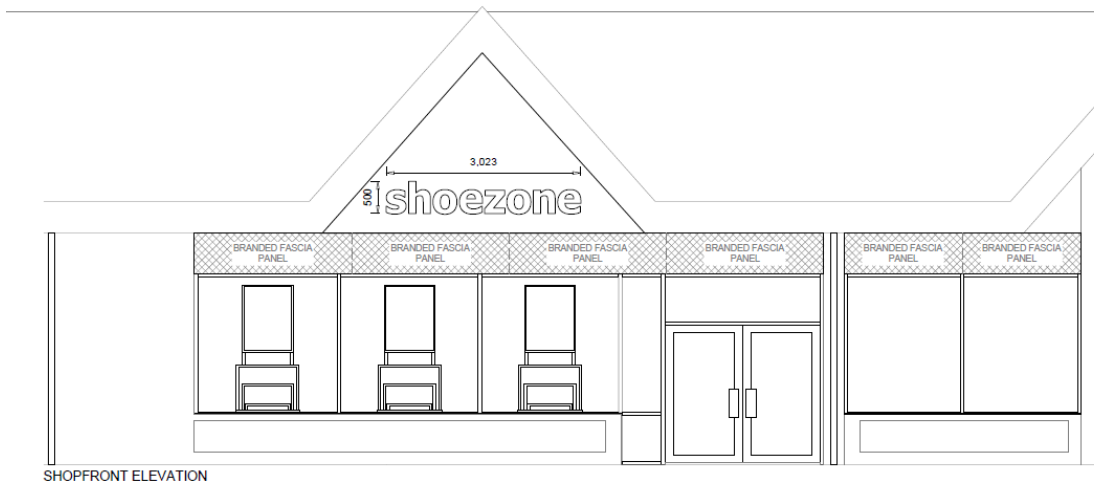


Photo to follow

Threadneedle completed the sub-division of the 6,000 sq ft former PoundWorld unit in mid-November and Greggs opened their third store in the town in the first week of December.

The adjoining unit of 4,047 sq ft was opened by Shoe Zone in the week starting 23 March 2020, as a relocation and upsize from the high street. However, the retail lockdown has meant it was closed almost as soon as it started trading.

Gregory Moore Property advised Threadneedle Property Unit Trust. John Beach of Ramsdens advised Shoe Zone.